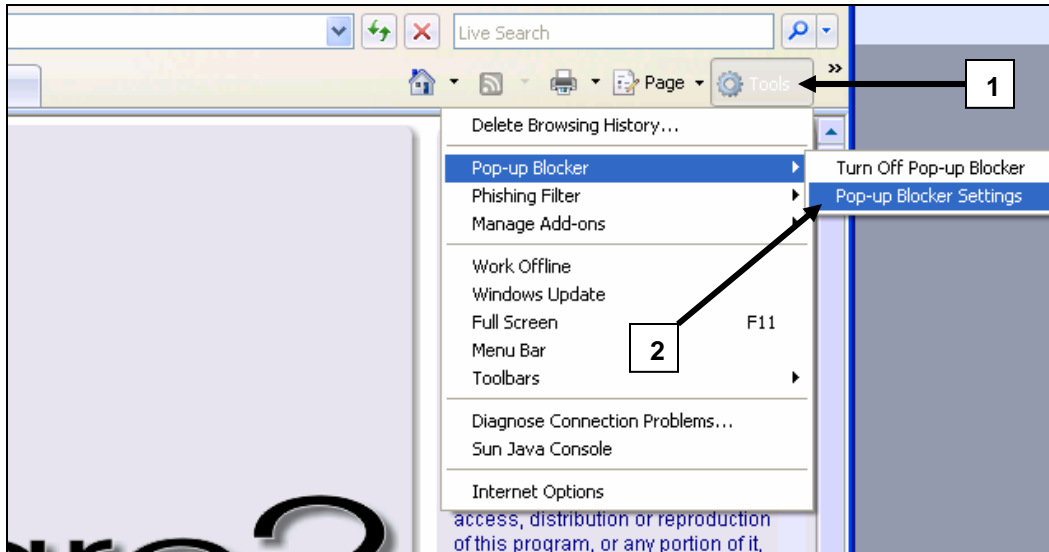


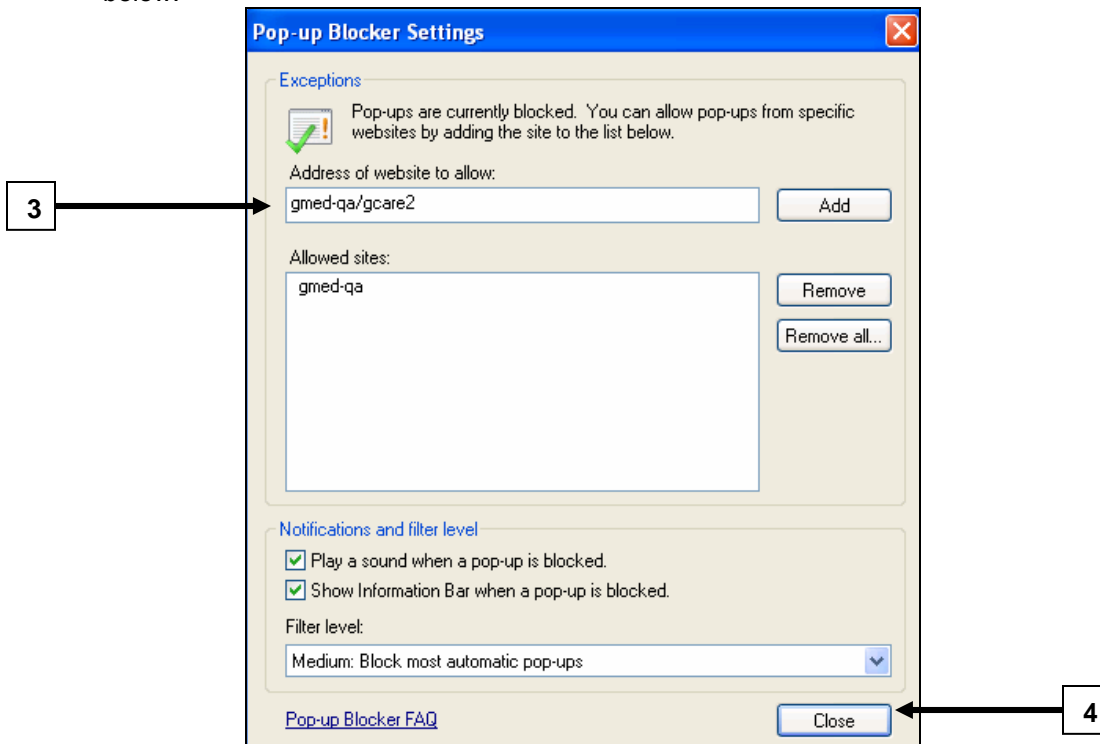
# How to Configure IE7 to be compatible with gCare

## Altering Pop-Up Blocker Settings

After installing IE 7 on your workstation, open up a session of Internet Explorer.



1. In the Upper Right corner, click on the “tools” dropdown arrow.
2. Select “Pop-up Blocker” and then “Pop-Up Blocker Settings”. This will open the screen below.

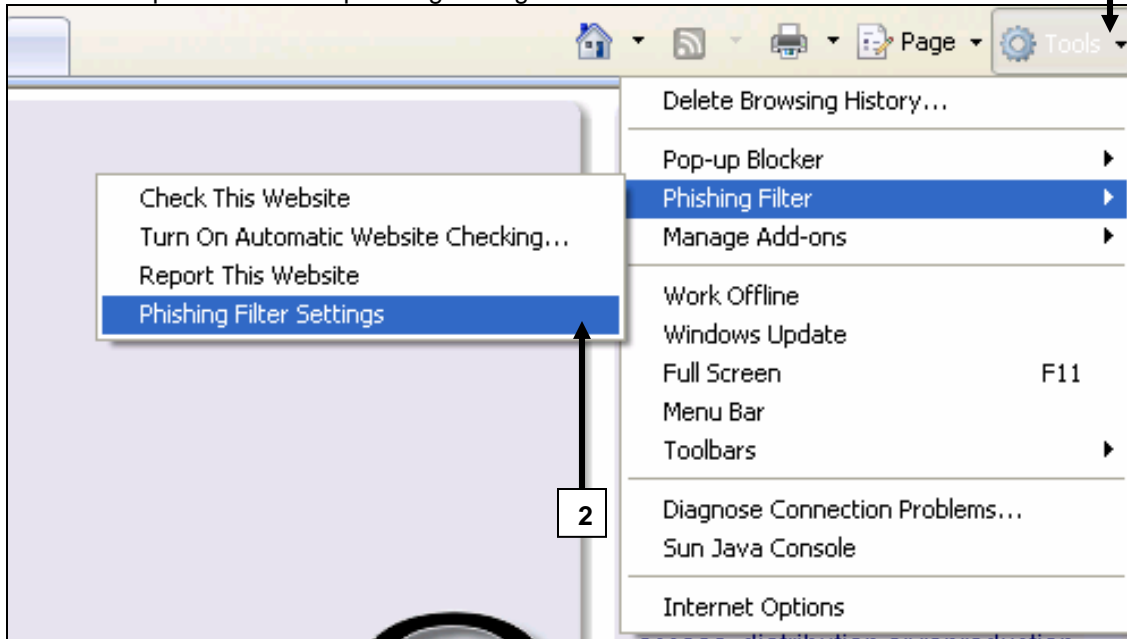


3. In the field called “Address of website to allow”, type in the address you use to connect to gCare (the gCare URL) then click “Add”.
4. Once the gCare URL has been added to the “Allowed sites”, click “Close”.

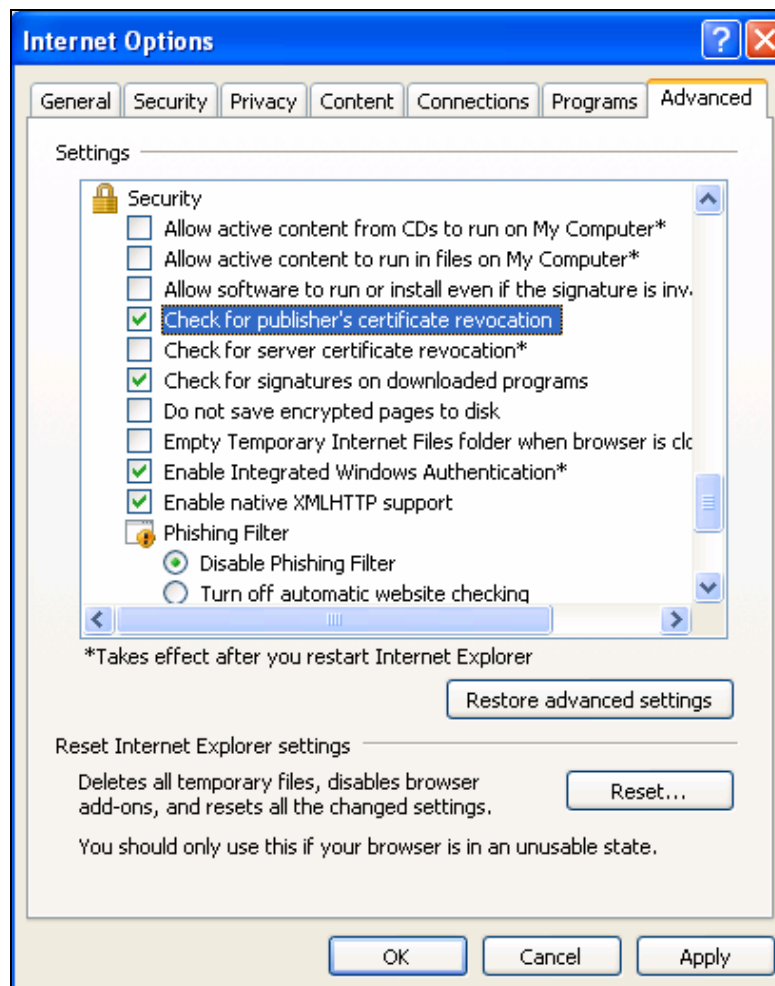
1

## Altering Phishing Settings

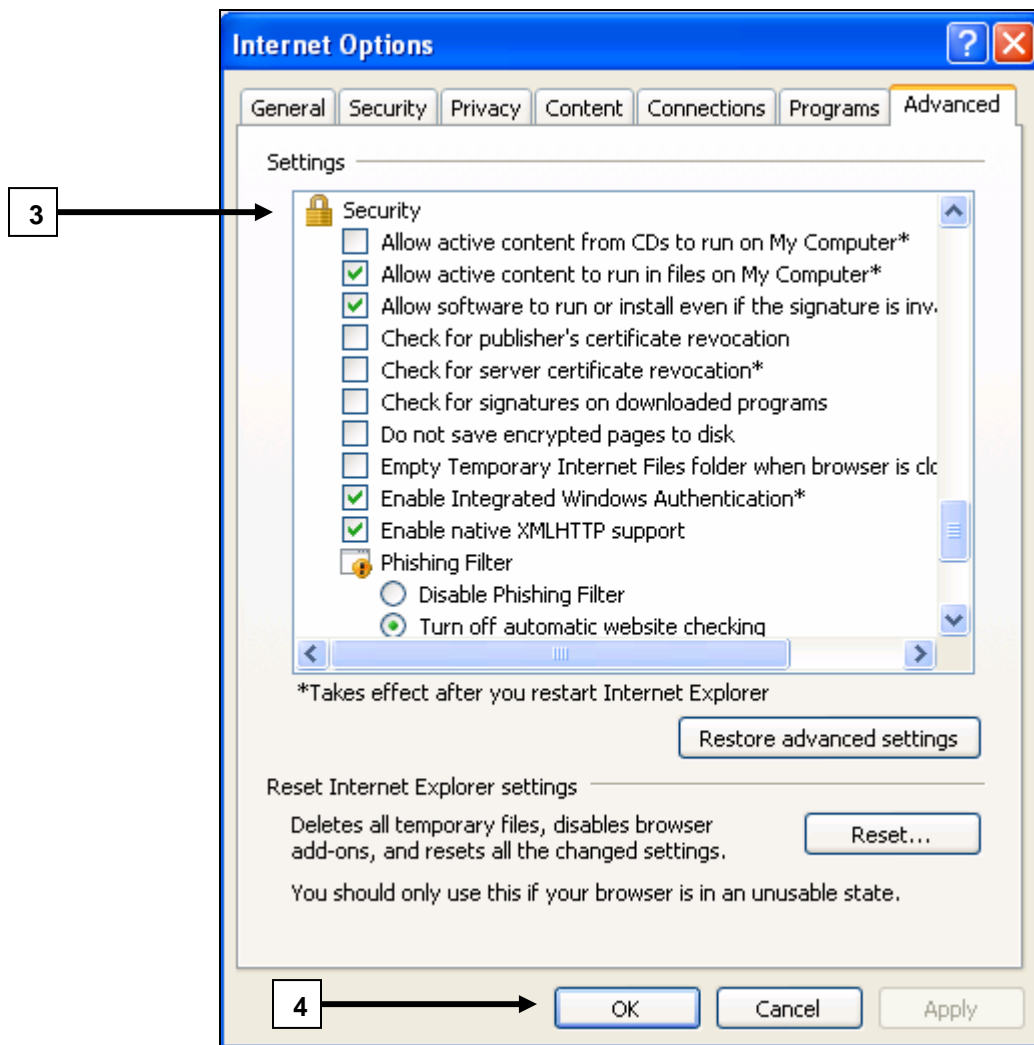
The next step is to alter the “phishing settings”.



1. In the Upper Right corner, click on the “tools” dropdown arrow.
2. Select “Phishing Filter”, and then “Phishing Filter Settings”. This will open the following screen:



## Altering Phishing Settings (continued)



- On the Internet Options "Advanced" tab, scroll down to the "Security" section. Make sure *only* the following settings are selected:
  - Allow active content to run in files on My Computer
  - Allow software to run or install even if the signature is invalid
  - Enable Integrated Windows Authentication
  - Enable native XMLHTTP support
  - Turn off automatic website checking
  - Use SSL 3.0
  - Use TLS 1.0
  - Warn about certificate address mismatch
  - Warn if POST submittal is redirected to a zone that does not permit posts
- Once the options are enabled, select "OK".